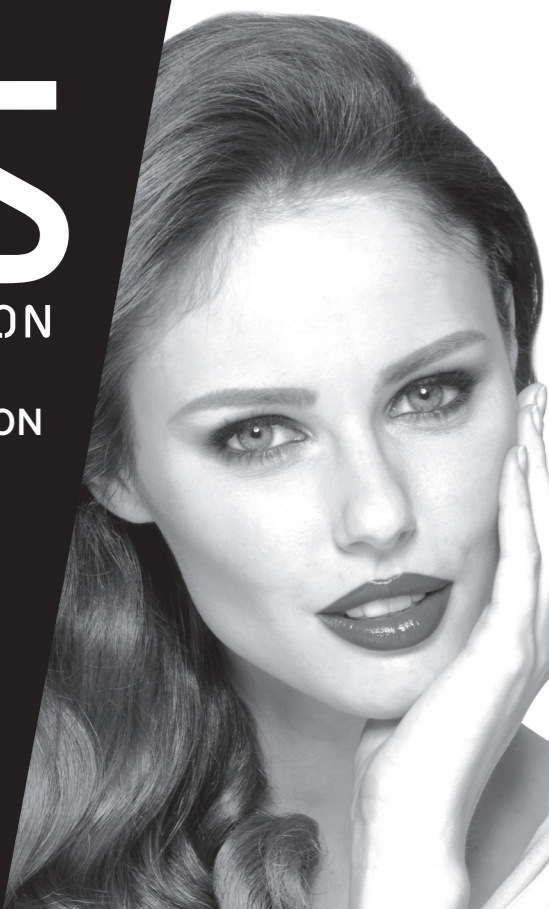




INSTRUCTION BOOKLET

POCKET ROCKET MINI PRO CURLER

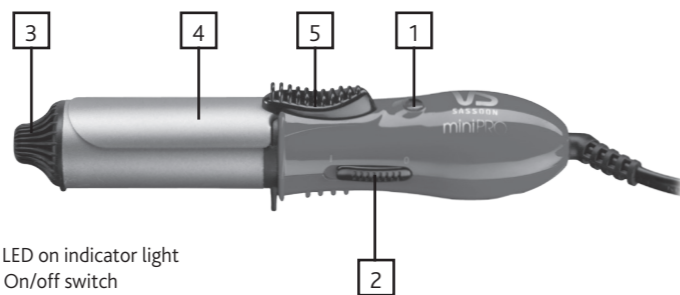
VSCD63A



ABOUT YOUR STYLER

CONGRATULATIONS!

Never go anywhere without your style buddy. Take it on your travels, store this life saver in your office draw or gym bag. You will instantly fall in love with this oh-so cute little pocket rocket. Ideal for guaranteed style on-the-go.



- 1. LED on indicator light
- 2. On/off switch
- 3. Cool tip
- 4. Clamp
- 5. Clamp lever

INSTANT HEAT	Great style waits for no-one so you will love the ultra-fast heat up.
25 MM BARREL	Perfect size barrel to easily create medium curls that bounce.
CERAMIC TECHNOLOGY	Generates full spectrum, infra red heat which works to help minimise heat damage making your hair less frizzy & more manageable.
BUILD IN COUNTER REST	A counter rest has been built into this styler to prevent it from rolling over, protect surfaces & make styling that much easier.
WORLD VOLTAGE	Automatically changes to the correct voltage. Wherever your travels take you.
MINI SIZE	Powerful things in small packages. Your space saving style buddy ideal for suitcases, gym bags & office drawers.

FIRST USE

- Remove all packaging and point of sale labels before use.
- Remove plastic cover from plug before use (used to protect it from damage during transportation)

OPERATING INSTRUCTIONS

- Plug you styler into a power outlet.
- Place your styler on a heat protective, flat level surface.
- Slide the 'O/I' switch to setting 'I' turn your styler on. The LED indicator on light will instantly illuminate, and at this point the styler will start heating up.
- To turn your styler off, slide the 'O/I' switch to setting 'O' turn your styler off. The LED indicator light will turn off.
- Allow styler to cool before storing.

WARNING: This is a high heat appliance. Care must be taken to avoid the hot surfaces of the appliance coming into direct contact with the skin, in particular the eyes, ears, face and neck.

IMPORTANT: This is a high heat appliance. If your hair has been heavily bleached or is chemically treated or you are concerned with the condition of your hair, please consult your hairdresser before using this appliance.

STYLE INSTRUCTIONS

- The red indicator light will stop flashing when the unit has heated up to the selected temperature. Your curling tong is now ready to use; the red indicator light will stay on.
 - Use on dry hair. Divide your hair into equal sections and comb before curling. Press down on the clamp lever, place the curling tong halfway up the section of hair and distribute the hair evenly between the clamp and the barrel. Gently pull the curling tong down to the tips of your hair.
 - To avoid crimped ends, make sure they are securely wound under the clamp in the direction of the desired curl. Remember always place the clamp on top of a section when making a curl you want rolled under; place the clamp under the section when making a flip style.
 - Wind the hair as far as you want it curled, being careful not to let the curling tong touch the scalp. Hold in place for a few seconds depending on the texture and length of your hair. Unroll once the hair is warm (not hot) to the touch.
 - To remove the curling tong, press down on the clamp lever to release your hair. To "set" the curl, wait until your hair has cooled before brushing or combing through.
 - After use, switch off and unplug the appliance. Allow to cool before storing away.
- NOTE:** This is a mini product. It is recommended to adjust the size of the sections to the size of the styler.

STYLE TIPS

CURLS

// Take a section & place hair between the clamp and the barrel. Make sure the ends are securely wound underneath the clamp in the direction of the desired curl. Wind up as far as you want your curl. Try to use the full length of the barrel to spread the section. Hold for five to eight seconds, or until you can feel that your hair is heated through. Press the lever to release the section & carefully slide the tong out. Leave curl to cool & set before combing or styling further.

MODERN

// Wind the tong up towards the hair root or as far up the hair section as you want curls. For a more modern curl, don't wind the tong right the way up to the top of the hair section; instead, leave at least 7cm from the root to the start of the curl.

TOUSLED

// For a more tousled look, finger comb the curls to break them up once the hair has cooled.

EXPERT TIPS

// The type of curl achieved depends not just on the size the barrel but also on the section of hair that you wind around the barrel of the curling tong. For looser, free-flowing curls, use bigger sections. Create a more defined, tighter curl by using sections. Pin the curl in the rolled shape and leave to cool for longer lasting results. Finish with a bit of hairspray for extra protection & hold prior to curling.

LOVE YOUR STYLE™
vssassoon.com.au

WARRANTY

Our goods come with guarantees that cannot be excluded under the Australian Consumer Law. You are entitled to a replacement or refund for a major failure and for compensation for any other reasonably foreseeable loss or damage. You are also entitled to have the goods repaired or replaced if the goods fail to be of acceptable quality and the failure does not amount to a major failure.

In New Zealand our goods come with a guarantee that cannot be excluded under the Consumer Guarantee Act 1993.

Limited Two Year Warranty

Conair Australia Pty Ltd. will repair or replace (at our option) your appliance free of charge for twenty-four months from the date of purchase if the appliance is defective in workmanship or materials. This warranty is an additional benefit and does not affect your legal rights. To obtain service under this warranty, please read the Warranty Leaflet included or contact Conair Customer Service at aus_info@conair.com.





To make a warranty claim you must retain your proof of purchase.

USER MAINTENANCE

Your styler is designed for household use and is virtually maintenance free. If cleaning becomes necessary, disconnect the appliance from the power outlet. Allow the appliance to cool and wipe exterior with a cloth. If any abnormal conditions occur, allow to cool and contact Conair Customer Service.

MULTI VOLTAGE


This curling tong has a multi voltage feature for worldwide use. It has an internal automatic converter which will automatically convert the voltage switch from 100-240V~ without the need of a switch. A suitable plug adaptor will be required, please refer to the chart below.

Plug adaptor required	Voltage & plug adaptors	Country
	British plug: 230V	Ireland, Great Britain, Singapore, South America, Hong Kong (parts only), Africa (parts only)
	European plug: 230V	Asia, Europe, Middle East Noumea, Scandinavia, South America, Hong Kong (parts only)
	Australian and New Zealand plug: 240V	Australia, New Zealand
	American plugs: 100 -120V	North America, Japan, Canada (parts of)

IMPORTANT SAFETY INSTRUCTIONS

The following safety precautions should always be followed when using electrical appliances, especially when children are present in your household. Please read these instructions carefully and keep for future reference.

DANGER

- **WARNING:** Do not use this appliance in or near bathtubs, showers, basins or other vessels containing water. Keep the appliance dry. 
- When this appliance is used in a bathroom, unplug it after use since the proximity of water presents a hazard even when the appliance is switched off.
- If this appliance falls into water, unplug it immediately- DO NOT reach into the water.

WARNING: Before and During Use

- Before using, always ensure that the voltage marked on the appliance is the same as your local power voltage.
- If the appliance is designed to be connected to a detachable power supply (otherwise known as a charger or adaptor), the appliance must only be used with the power supply it was sold with.
- Do not operate this appliance or disconnect from the power supply with wet hands.
- Never use this appliance at the same time as styling products such as aerosols (spray).
- Be very careful when handling this appliance as parts of it may get extremely hot.
- Do not place the appliance on any heat sensitive surface or near flammable materials or objects.
- Keep the cord away from heated surfaces.
- Never block the air openings of the appliance or place on a soft surface such as a bed or couch, where the air openings may be blocked. Keep the air openings free of lint and other debris.
- Do not cover this appliance with anything when it is switched on or hot.
- To avoid electric shock, do not drop or insert any object into an opening in this appliance.

WARNINGS: for Storage and Maintenance

- Always unplug the appliance immediately after use and before cleaning or maintenance.
- Do not leave the appliance unattended when plugged in or switched on.
- Always allow the appliance to cool down before storing away in a location where children cannot reach it.
- Do not store or place this appliance in a location where it can fall or be pulled into a bath or sink.
- Do not wrap the supply cord around this appliance when storing as over time this may cause damage to the cord.
- If the supply cord is damaged it must be replaced by the manufacturer, its service agent or similarly qualified persons in order to avoid a hazard.
- Never operate this appliance if it has been dropped or damaged, or if it is not working correctly.
- If this appliance is serviced by an unqualified person this could result in an extremely hazardous situation for the user. Contact Conair Customer service if you have any issues operating your styler.

CAUTION

- This appliance is not intended for use by persons (including children) with reduced physical, sensory or mental capabilities or lack of experience and knowledge unless they have been given supervision or instruction concerning use of the appliance by a person responsible for their safety.
- Children should be supervised to ensure they do not play with the appliance.
- Use this appliance only for its intended use and as described in this manual. This appliance is not intended for commercial use.
- Do not use any attachments other than those supplied by Conair Australia Pty Ltd.
- For additional protection, the installation of a residual current device (RCD) with a rated operating current not exceeding 30mA is advisable in the electrical current circuit supplying the bathroom. Ask your installer for advice.



Vidal Sassoon and related logos are trademarks of The Procter & Gamble Company used under license by Conair

©2015 Conair Australia Pty Ltd
Suite 101, 18 Rodborough Rd
Frenchs Forest NSW, 2086
Australia

CUSTOMER SERVICE:
Australia: 1800 650 263
New Zealand: 0800 266 247

CONTACT US:
For advice, tips on your new VS product
E-mail us on: aus_info@conair.com
vssassoon.com.au
VSCD63A