



INSTRUCTION BOOKLET

VSHA2725A

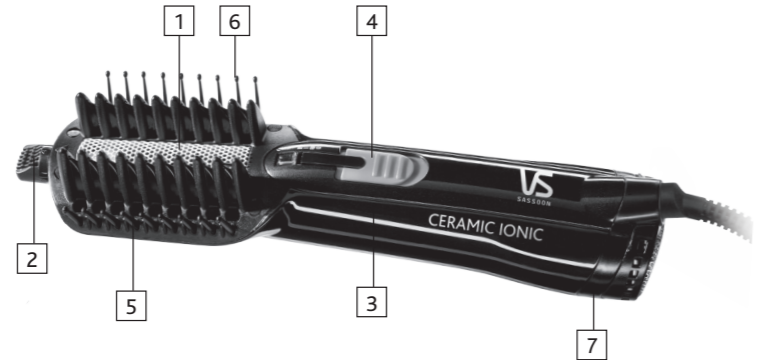


STRAIGHTENING BRUSH WET & DRY

### ABOUT YOUR STYLER

#### CONGRATULATIONS!

The Straightening Brush for Wet & Dry hair features patented technology that straightens and volumises hair as it dries.



- 1. Hot air blows through the ceramic smoothing plate to add volume and shine
- 2. Tension control system
- 3. Easy to hold body
- 4. Control settings (3 heat/speed including cool)
- 5. Ceramic plated combs
- 6. De-tangling combs
- 7. 800W of drying power

TENSION CONTROL SYSTEM	Four straightening settings for different hair types.
COMB	De-tangling comb to ensure easy styling and smooth results.
IONIC CONDITIONING	Internal ionic generator which conditions hair to reduce static, leaving your hair with an enhanced shine. Smooth and shiny results in minutes.
CONTROL SETTINGS	3 heat/speed settings including cool.
CERAMIC PLATED COMBS	Ceramic plated combs to ensure you can straighten your hair in minutes. Leaving it smooth and shiny.

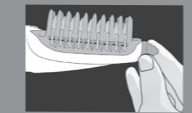
### FIRST USE

- Remove all packaging and point of sale labels before use.
- Remove plastic cover from plug before use (used to protect it from damage during transportation)

### OPERATING INSTRUCTIONS

#### 1. PREPARE YOUR HAIR

- a. Wash and untangle your hair carefully using a large toothed comb
  - Expert's advice – always untangle your damp hair at the tips and slowly work up your hair towards your scalp (gently untangling your hair prevents split ends from forming).
- b. Towel dry or pre-dry your hair. (Your styler can be used on wet/damp hair or dry hair – for best results use your styler when hair is damp).



- c. Select the Tension control that best suits your hair type
  - Expert's advice – in order to familiarise yourself with the styler, it is suggested that you use the Tension on control 1 (the weakest tension), until you've found the setting that best suits your hair type.

#### d. Work in steps

1. Clip the top layer of hair up using one or more clips and start with the hair underneath and at the nape of your neck.
2. Continue with the hair at the back of your head and then the hair on the sides.
3. Finish by using the cool setting.
  - Expert's advice – for best styling results, while maintaining tension, slowly pull the styler down along the hair section, towards the ends of the hair. It is very important to hold the hair section firmly taut when using the product (as you would do with a straightener). At the end of the hair section, release the

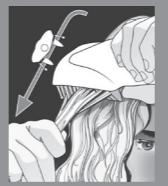
pressure and allow the hair section to slide out. Repeat process as necessary until the desired effect is achieved. (It may be necessary to repeat this process on certain areas, depending on the texture and thickness of your hair).

- These are recommendations only, practice makes perfect!

#### 2. STRAIGHTEN, SHINE AND VOLUME

This straightening brush is the ideal styling tool for straightening and creating volume with maximum shine.

##### Straightening with volume



- To reduce the volume of thick or voluminous hair, place the head of the Airstyle on top of the section of hair and slide slowly down the section to the bottom.



- To add body to fine or flat hair, place the head of the Styler underneath the section of hair; it will straighten and create volume while lifting the roots and adding body.
- Repeat if necessary and finish with the cool setting on the section to perfect the hold.

##### Creating volume at the roots



- Take up a section of hair of about 3cm wide and place the head of the styler as close as possible to the roots, under the section. Ensure that the combs go through your hair completely.
- Rotate the styler approximately 45° while sliding it toward the ends. This rotating movement will add maximum volume to your roots.
- Repeat if necessary and finish with the cool setting.

### STYLE TIPS

#### VOLUME

- // Straight hair doesn't have to be poker straight. Create volume by making a curved movement with your wrist as you glide the straighteners down the hair length.

#### SHORTER STYLES

- // Straight hair isn't just for long styles. Create a classic glossy bob by using this straightener on your shorter cut.

LOVE YOUR STYLE™  
vssassoon.com.au

## WARRANTY

Our goods come with guarantees that cannot be excluded under the Australian Consumer Law. You are entitled to a replacement or refund for a major failure and for compensation for any other reasonably foreseeable loss or damage. You are also entitled to have the goods repaired or replaced if the goods fail to be of acceptable quality and the failure does not amount to a major failure.

In New Zealand our goods come with a guarantee that cannot be excluded under the Consumer Guarantee Act 1993.

### Limited Two Year Warranty

Conair Australia Pty Ltd. will repair or replace (at our option) your appliance free of charge for twenty-four months from the date of purchase if the appliance is defective in workmanship or materials. This warranty is an additional benefit and does not affect your legal rights. To obtain service under this warranty, please read the Warranty Leaflet included or contact Conair Customer Service at [aus\\_info@conair.com](mailto:aus_info@conair.com).

**To make a warranty claim you must retain your proof of purchase.**



Vidal Sassoon and related logos are trademarks of The Procter & Gamble Company used under license by Conair

©2016 Conair Australia Pty Ltd  
Suite 101, 18 Rodborough Rd  
Frenchs Forest NSW, 2086  
Australia

**CUSTOMER SERVICE:**  
Australia: 1800 650 263  
New Zealand: 0800 266 247

**CONTACT US:**  
For advice, tips on your new VS product  
E-mail us on: [aus\\_info@conair.com](mailto:aus_info@conair.com)  
**[vssassoon.com.au](http://vssassoon.com.au)**  
VSHA2725A

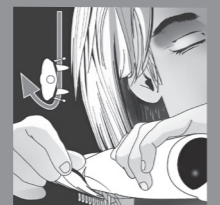
### Turning the ends under (this is also suitable for styling fringes)



- Take up a suitable section of hair of about 3cm wide and place the head of the styler as close as possible to the roots, under the section of hair.
- Turning the handle under slightly, slide the unit slowly over the tips, using your free hand if necessary to guide the rounding of the section.

- Hold in place for 5 seconds: the effect of the ceramic coated straightening plates is then maximized.
- Repeat if necessary and finished with the cool setting.

### Turning the ends out



- Take up a section of hair of about 3cm wide and place the head of the styler as close as possible to the roots, on top of the section of hair.
- Turning the handle out slightly, slide the unit slowly over the tips, using your free hand if necessary to guide the rounding of the section.

- Hold in place for 5 seconds: the effect of the ceramic coated straightening plates is then maximized.
- Repeat if necessary and finish with the cool setting.

### Maintaining shape

- Your Hair Designer™ Your styler is also perfect for daily 'comb through': you feel like you have to tame a rebellious section of hair, or your style lacks bounce... in minutes you will give your hair extra shine and body.

## TENSION CONTROL SYSTEM™

The Tension Control System™ is a patented 4 position dial control that adapts the internal tension to suit every type of hair: no more tugging and pulling of hair during laborious blow-drying. The internal tension is weakest on position 1 and very strong on position 4.



**Position 1 - Straight/Wavy Hair** (this is the weakest setting)



**Position 2 - Curly Hair** (this is a stronger setting than position 1)



**Position 3 - Very Curly Hair** (this is an even stronger setting)



**Position 4 - Frizzy Hair** (this is the strongest setting and can be used on frizzy hair and hard to style hair)

To adjust the Tension Control System™, turn the dial clockwise until the control clicks into place. Ensure that the number corresponding to your hair type is visible when looking over the top of the product (number should be positioned so it is in line with the ceramic smoothing plate).

## INTERNAL IONIC GENERATOR



The Straightening Brush features an advanced internal ionic generator. This generator conditions hair by emitting negative ions to reduce static, by leaving hair silky and shiny with reduced frizz.

## 3 TEMPERATURE SETTINGS INCLUDING COOL SETTING

There are 3 heat/speed settings including cool setting. The low heat/speed setting (position 1) combines an ideal airflow and temperature for shaping finer hair.

**The airflow on Position 1 is ideal for dry hair.**

The high heat/speed setting combines a stronger airflow and higher temperature for curly to frizzy hair.

**The airflow on Position 2 is ideal for damp hair.**

Use the cool setting on warm hair to rapidly cool and set the style in place for a longer lasting effect.

**The shot of cool air is ideal after styling the hair.**

## IONIC CONDITIONING TECHNOLOGY™

Many aspects of modern living, including air conditioning, contact with man made fibres and air pollution, add to the buildup of static electricity in the hair. Even brushing and towel-drying the hair can increase these levels.

This static charge causes the scales, or cuticle of the hair to push each other apart, resulting in a rough hair surface where the hairs cannot lie smoothly against each other. Consequently, hair may have a dull appearance. High levels of static charge cause hair to become 'flyaway' and difficult to style. The internal ionic generator emits a stream of negative ions which act to neutralize the static charge (positive ions), leaving hair silky and shiny with reduced frizz.

### What is Ceramic Technology?

Hair damage is minimized, as the ceramic heat delivers even heat distribution from the styling appliance, reducing harmful and damaging hotspots. Ceramic heat is a gentle, faster styling tool that retains heat longer vs non-ceramic heat.

## IMPORTANT SAFETY INSTRUCTIONS

The following safety precautions should always be followed when using electrical appliances, especially when children are present in your household. Please read these instructions carefully and keep for future reference.

### DANGER

- **WARNING:** Do not use this appliance in or near bathtubs, showers, basins or other vessels containing water. Keep the appliance dry.
- When this appliance is used in a bathroom, unplug it after use since the proximity of water presents a hazard even when the appliance is switched off.
- If this appliance falls into water, unplug it immediately- DO NOT reach into the water.

### WARNING: Before and During Use

- Before using, always ensure that the voltage marked on the appliance is the same as your local power voltage.
- If the appliance is designed to be connected to a detachable power supply (otherwise known as a charger or adaptor), the appliance must only be used with the power supply it was sold with.
- Do not operate this appliance or disconnect from the power supply with wet hands.
- Never use this appliance at the same time as styling products such as aerosols (spray).
- Be very careful when handling this appliance as parts of it may get extremely hot.
- Do not place the appliance on any heat sensitive surface or near flammable materials or objects.
- Keep the cord away from heated surfaces.
- Never block the air openings of the appliance or place on a soft surface such as a bed or couch, where the air openings may be blocked. Keep the air openings free of lint and other debris.
- Do not cover this appliance with anything when it is switched on or hot.
- To avoid electric shock, do not drop or insert any object into an opening in this appliance.

### WARNINGS: for Storage and Maintenance

- Always unplug the appliance immediately after use and before cleaning or maintenance.
- Do not leave the appliance unattended when plugged in or switched on.
- Always allow the appliance to cool down before storing away in a location where children cannot reach it.
- Do not store or place this appliance in a location where it can fall or be pulled into a bath or sink.
- Do not wrap the supply cord around this appliance when storing as over time this may cause damage to the cord.
- If the supply cord is damaged it must be replaced by the manufacturer, its service agent or similarly qualified persons in order to avoid a hazard.
- Never operate this appliance if it has been dropped or damaged, or if it is not working correctly.
- If this appliance is serviced by an unqualified person this could result in an extremely hazardous situation for the user. Contact Conair Customer service if you have any issues operating your styler.



### CAUTION

- This appliance is not intended for use by persons (including children) with reduced physical, sensory or mental capabilities or lack of experience and knowledge unless they have been given supervision or instruction concerning use of the appliance by a person responsible for their safety.
- Children should be supervised to ensure they do not play with the appliance.
- Use this appliance only for its intended use and as described in this manual. This appliance is not intended for commercial use.
- Do not use any attachments other than those supplied by Conair Australia Pty Ltd.
- For additional protection, the installation of a residual current device (RCD) with a rated operating current not exceeding 30mA is advisable in the electrical current circuit supplying the bathroom. Ask your installer for advice.